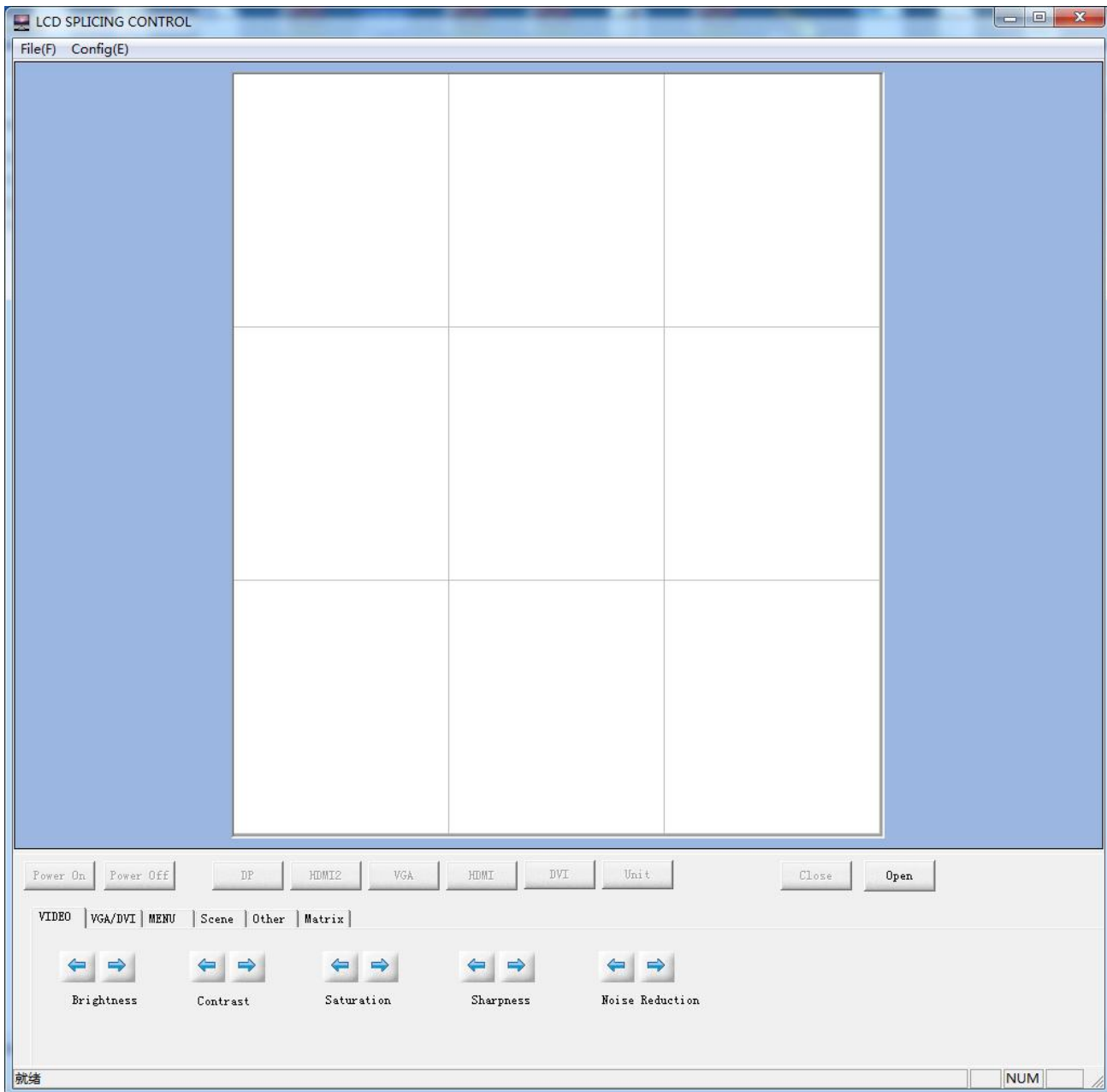


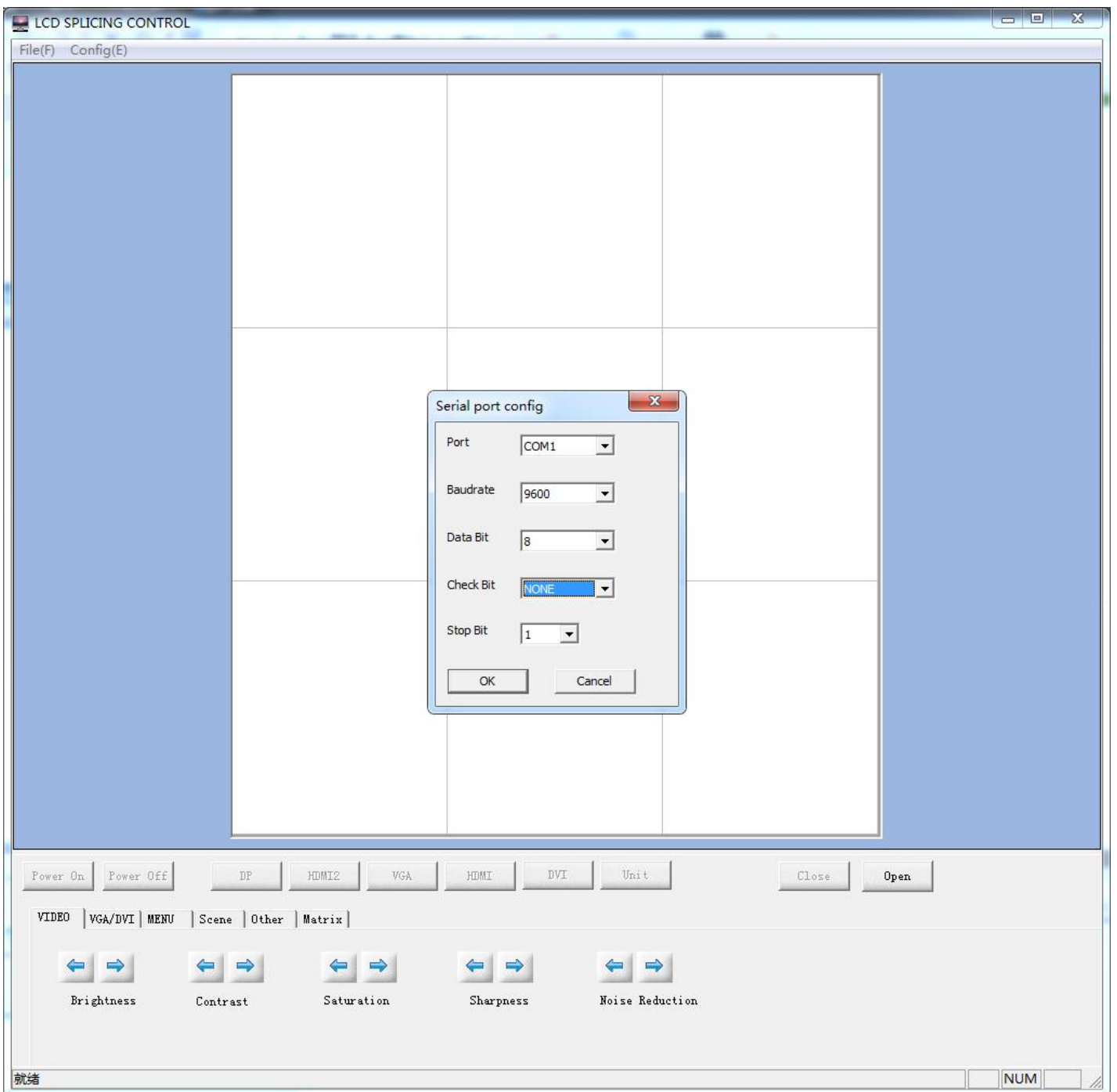
Main Interface



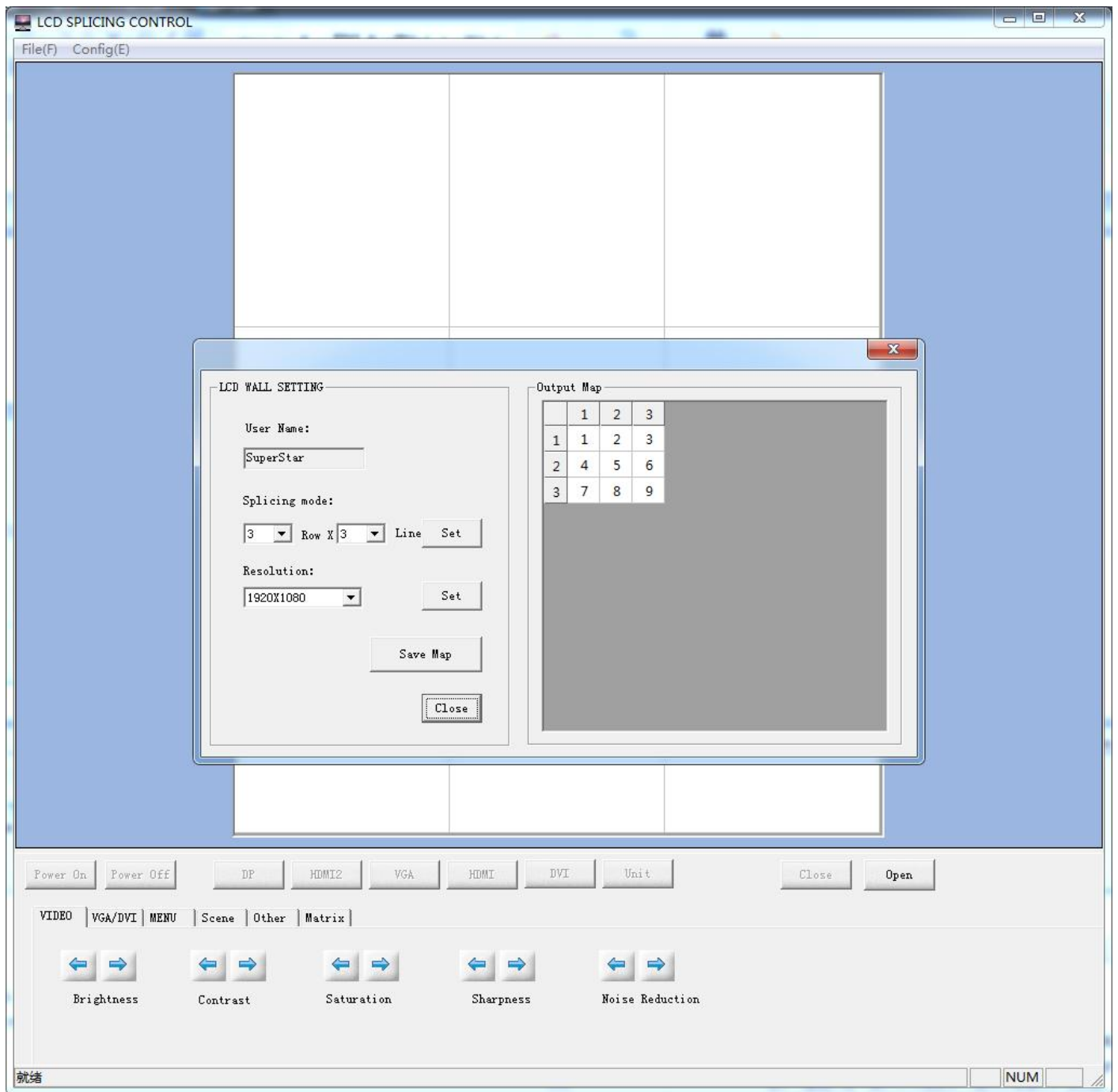
1.1 Menu

- File: Exit the software
- Management, password : 66666666
- Configuration:

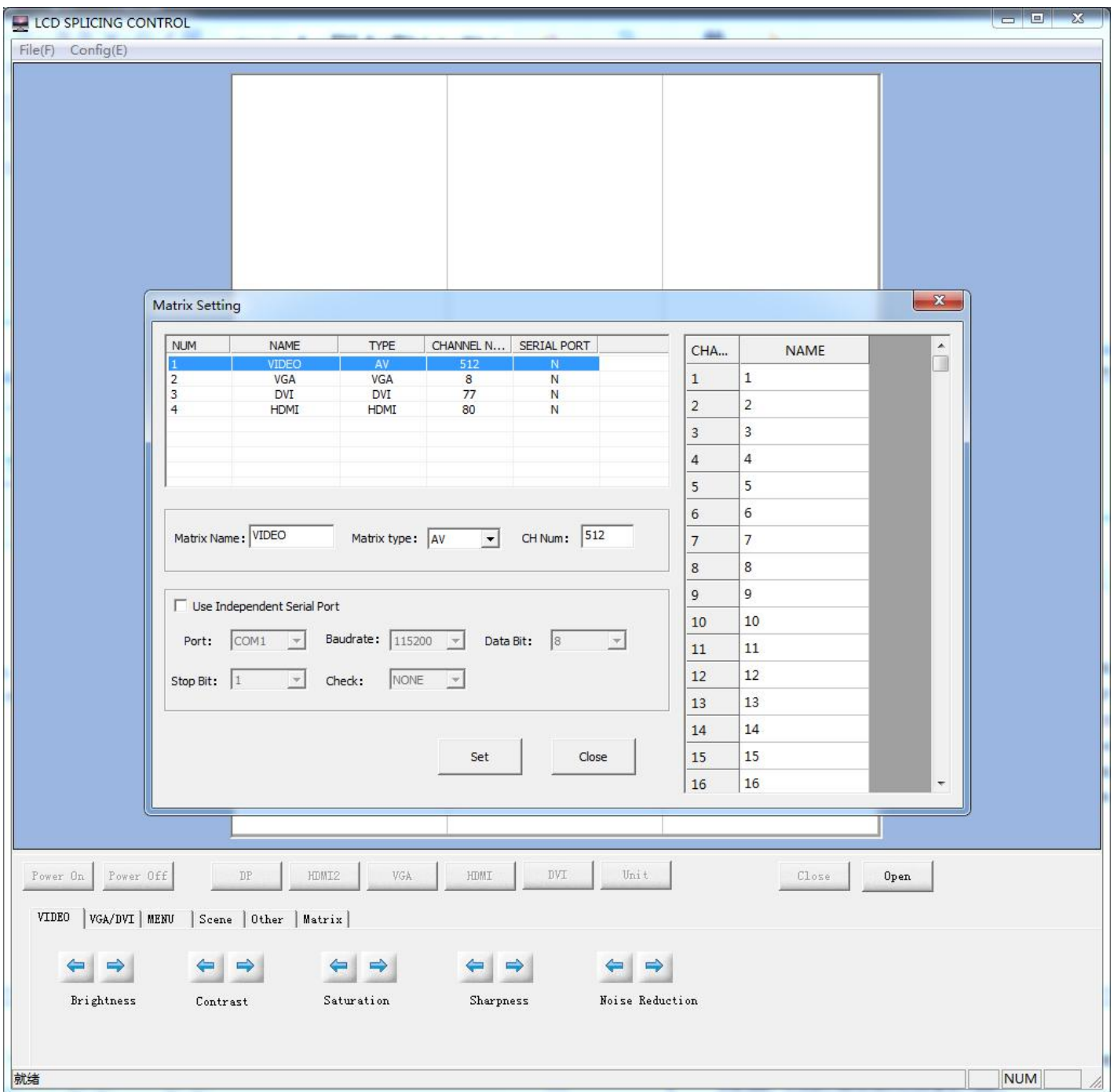
(1) Connect: Firstly need to “close the com port”, then click “Connect” to choose the correct Com port, the other settings keep default



(2) LCD wall: set up according to the exact video wall Row and Line, click "Set", and "Close", then exit this setting.

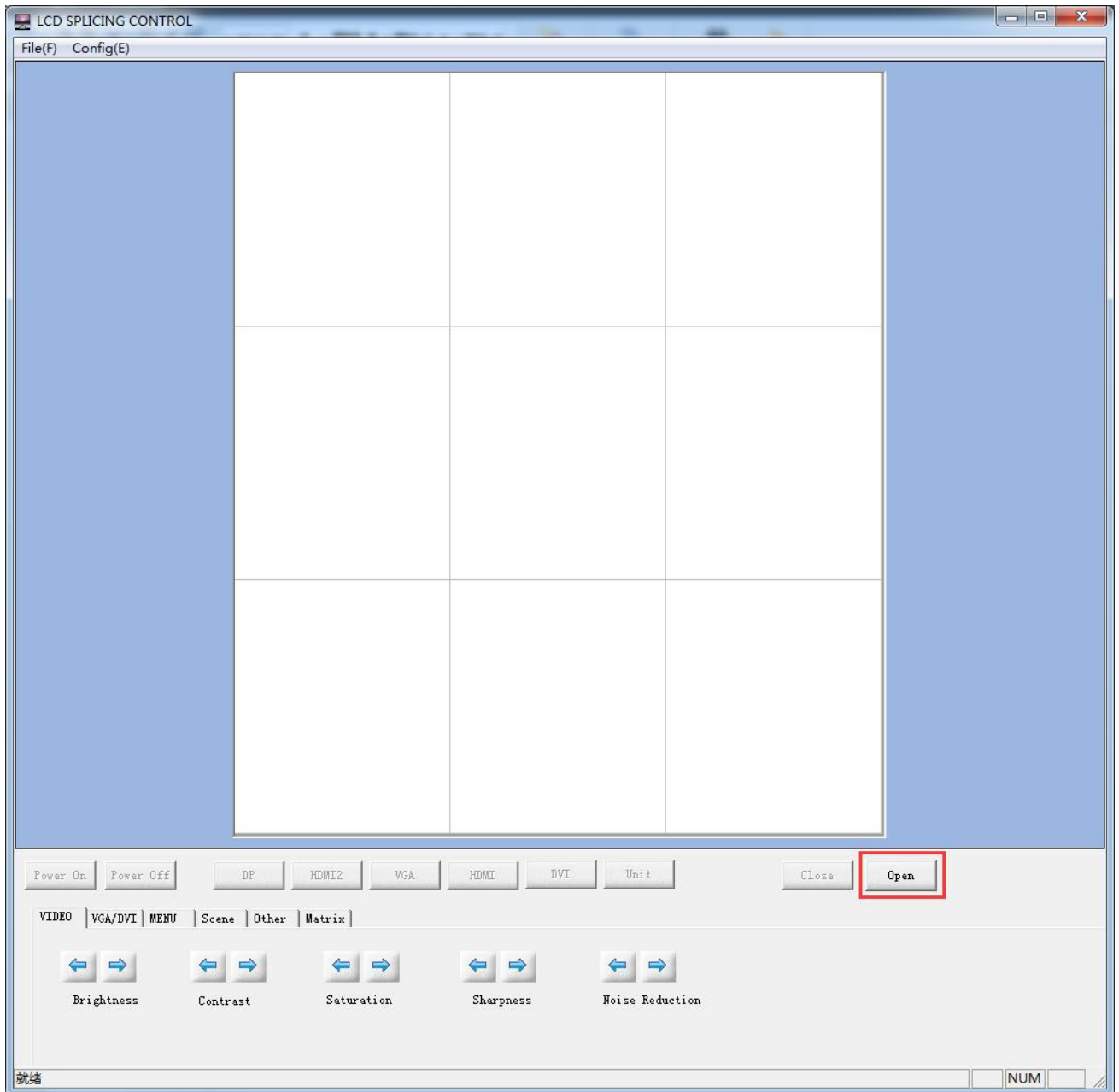


- (3) Matrix: Set up the matrix control information.
- Can set up different signal source HDMI/DVI/AV/VGA, input channel number, and independent serial port.



2.2 Operation zone

- Drag the mouse and move the cursor to select the screens, then put the cursor to the below “function zone”, click the relative button to adjust the setting. Except the “Serial port config” can be operated, all other settings can be operated only after click “Open” and make the LCD wall communicated.



2.2.2.Function zone:



- Power on: Under power off state, click this button to turn on the selected screen.
- Power off: Under power on state, click this button to turn off the selected screen.
- DP: After selecting the screen, click this button to switch the input signal of the selected screen to PD.
- HDMI2: After selecting the screen, click this button to switch the input signal of the selected screen to HDMI2.
- VGA: After selecting the screen, click this button to switch the input signal of the selected screen to VGA.
- HDMI: After selecting the screen, click this button to switch the input signal of the selected screen to HDMI.
- DVI: After selecting the screen, click this button to switch the input signal of the selected screen to DVI.

- Unit: After selecting the screen, click this button the selected screen can be executed the unit display under the current signal source

- Close: close the com port, all operation is invalid.

- Open: open the com port, all the operation is valid.

2.2.3. Additional function zone:

4.2.3.1 VIDEO image adjust



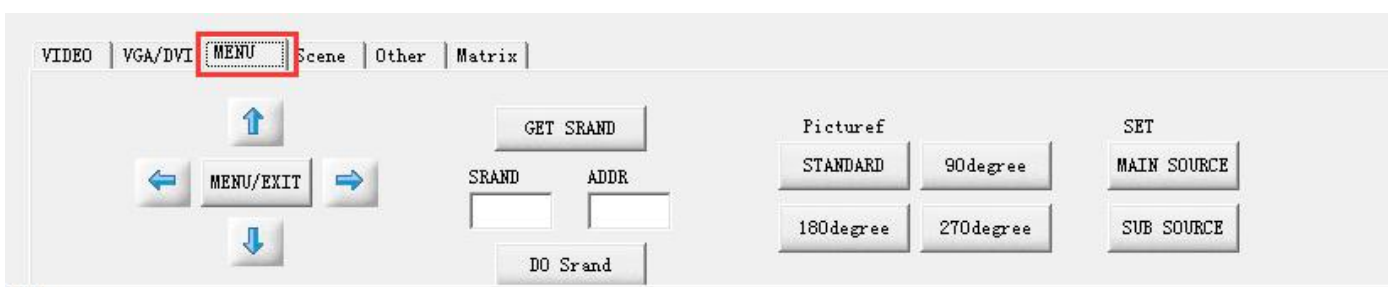
- Brightness: Adjust the brightness of the selected screen.
- Contrast: Adjust the Contrast of the selected screen.
- Saturation: Adjust the color dark and light of the selected screen.
- Sharpness: Adjust the Sharpness of the selected screen.
- Noise Reduction: Adjust the Noise Reduction of the selected screen.

4.2.3.2 VGA/DVI image adjust



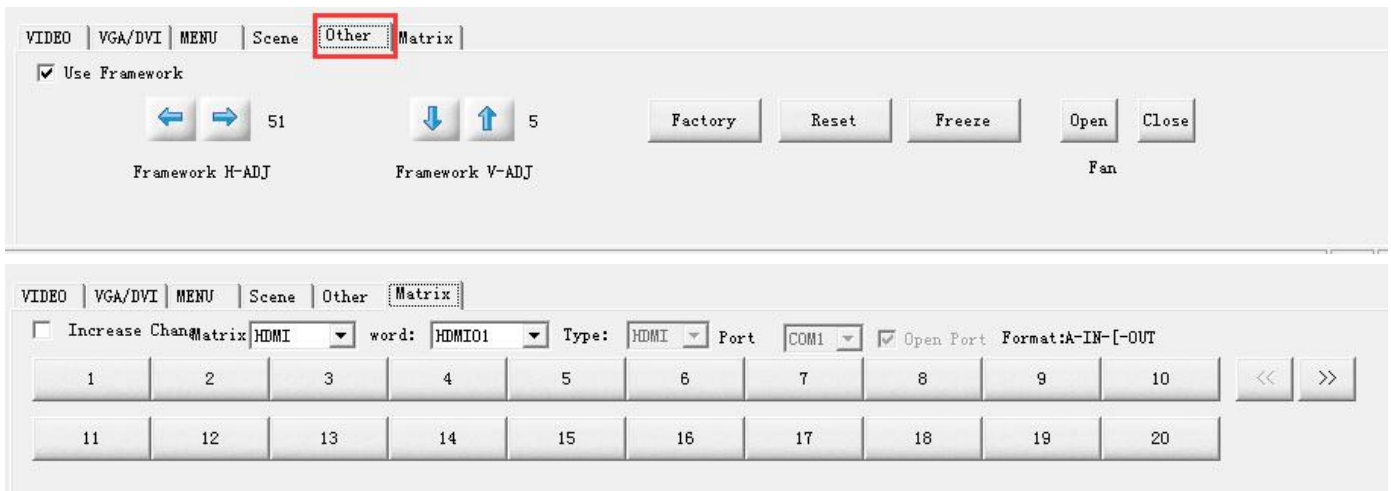
- Brightness: Adjust the brightness of the selected screen.
- Contrast: Adjust the Contrast of the selected screen.
- H-position: Adjust the Horizontal position of the image.
- V-position: Adjust the Vertical position of the image.
- Clock: Transverse widening the display zone of the selected screen
- Auto: Intelligent adjust the selected screen.
- ADC: ADC auto adjust.
- Color Tem: Auto correction the VGA color difference.

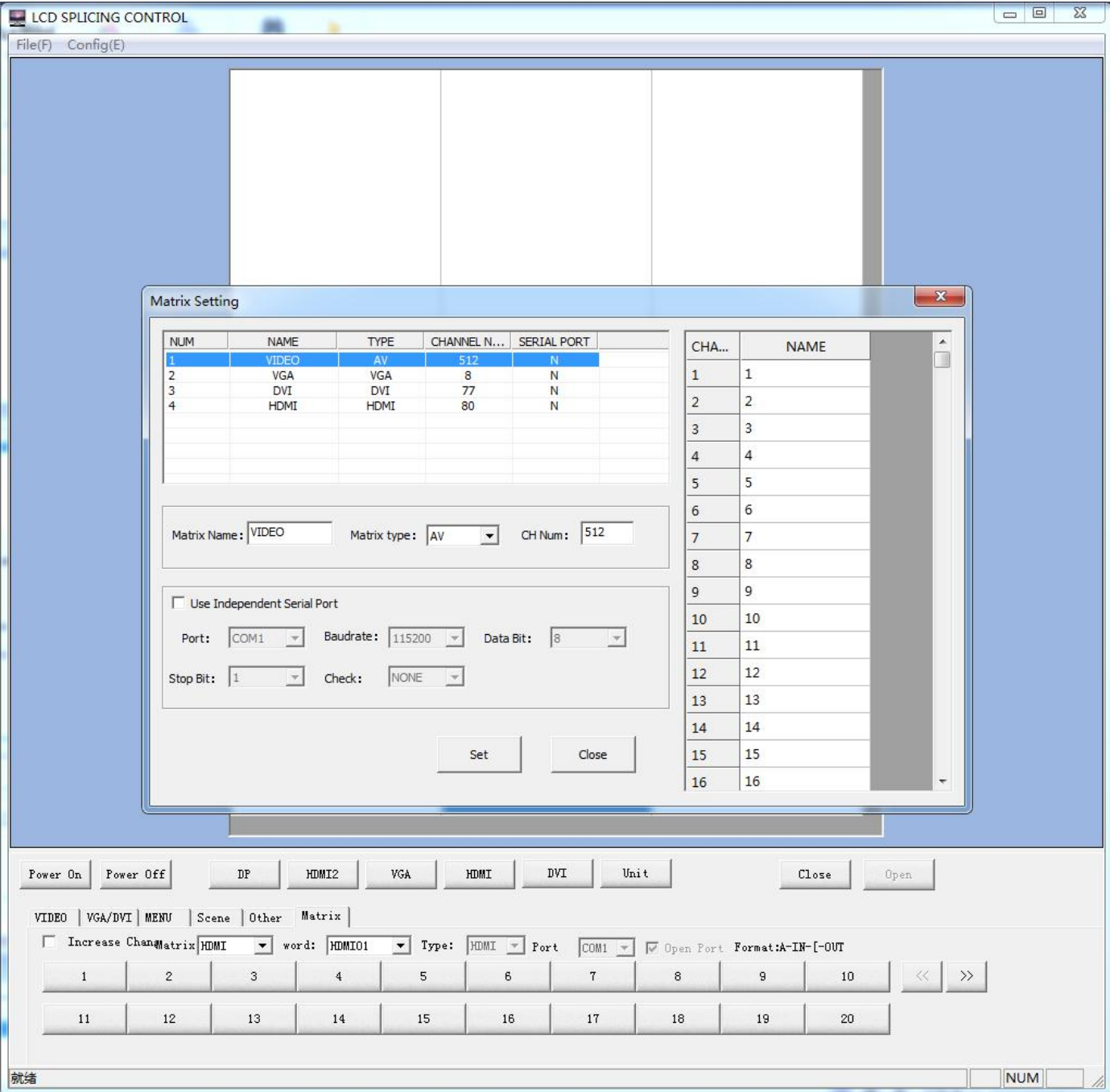
2.2.3.3 MENU

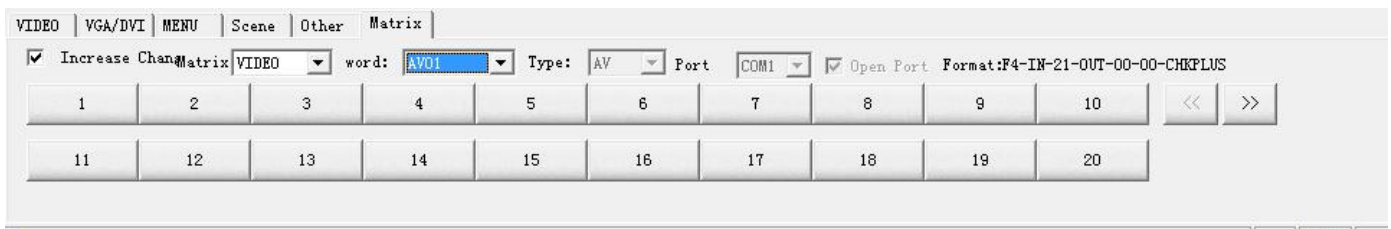
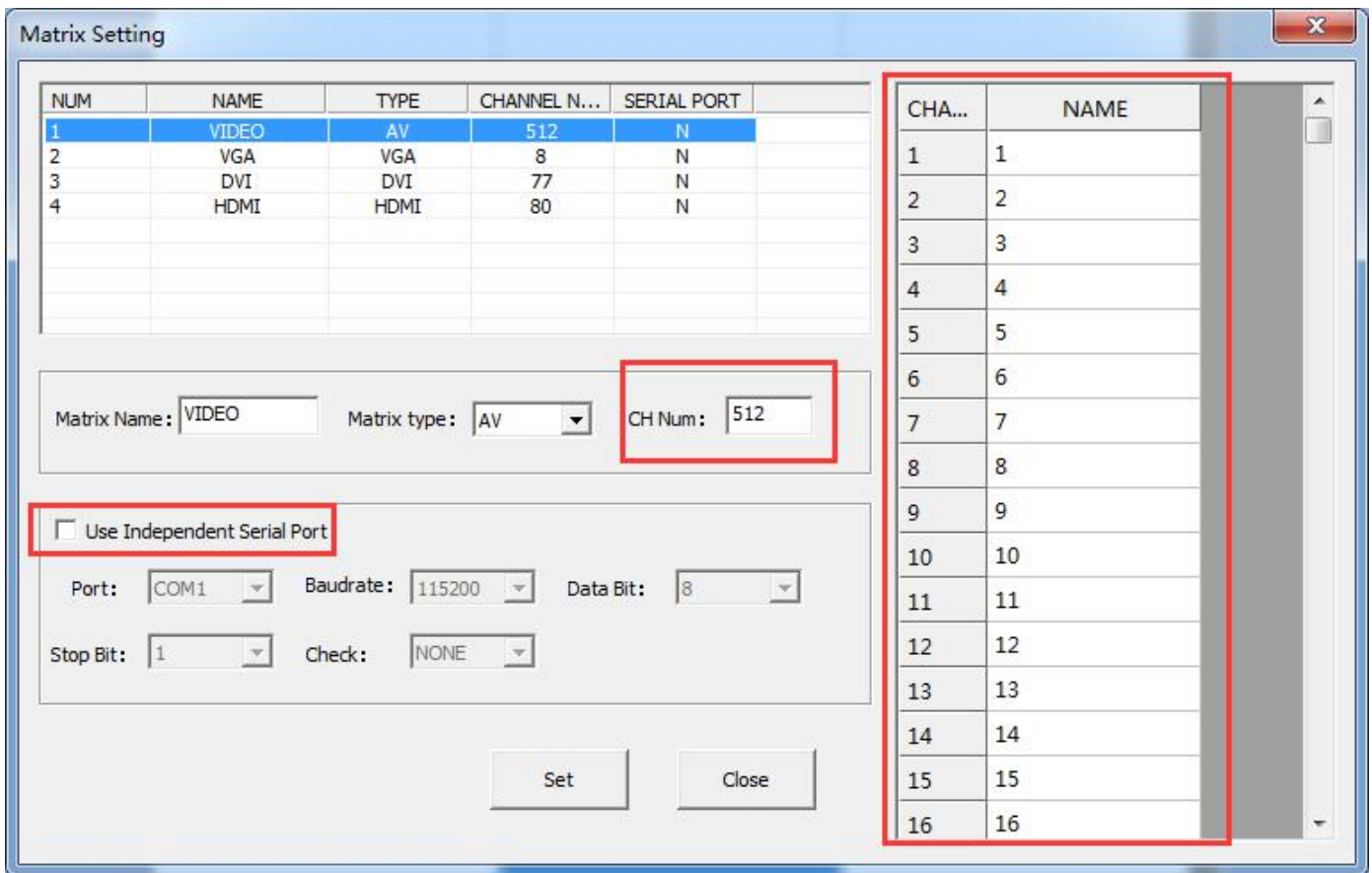


- Menu/Exit: Open or exit the menu.
- Up: Cursor move up
- Down: Cursor move down
- Left: Menu move to left or decreasing adjust.
- Right: Menu move to right or increasing adjust.
- Get Srand : Show the Srand number of the current screen on the LCD wall, fill in that number in the Srand. Fill in the screen ID in the add, click DO Srand, then the LCD wall ID finish setting.
- DO Srand: Execute the LCD ID setting.
- Picture rotation: support 0°,90°,180° and 270°rotation.
- Main source: Select the main source screen
- Sub source: Select the looping out screen.

2.2.3.5 Frame display







2.3 Scene

